

Geneva Lake Management Plan Stakeholder Kickoff Meeting January 26th, 2023



4:00 - 5:00 pm: Thoughts from a few partnering organizations

5:00 - 6:00 pm: Thoughts from the audience

**Water Alliance
for Preserving
Geneva Lake**



Charles L. Colman

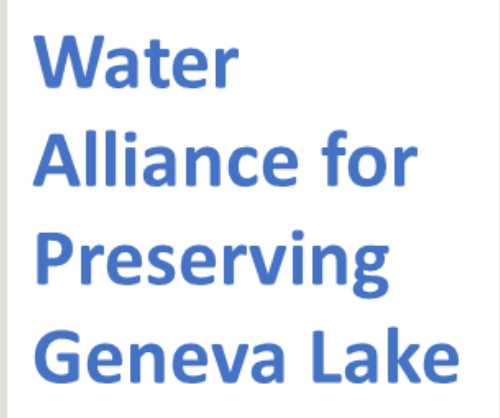
Co-Chair for the Water Alliance for the Protection of Geneva Lake.
Chairman of Southeastern Wisconsin Regional Planning Commission (SEWRPC).

Mobile Phone: 262-903-4453

Email: ccolman01@charter.net

Water Alliance Mission: To bring lake management organizations together for resolution of lake issues.

Vision: To build a capable and well-funded organization to protect the future of Geneva Lake.



Geneva Lake Management Plan Purpose

- Identifies and researches projects in support of the health and beauty of Geneva Lake
- Develops priorities and costs of the projects
- Highlights the basis for what is needed to protect the Lake

Need for Updated Management Plan

- Last Plan was in 2008 – 15 years ago.
- Significant Changes
 - Increasing development and piers
 - Heavier rain events damaging tributaries
 - Entry of more invasive species
 - More boating and heavier boats eroding shorelines

Karen Yancey

Geneva Lake Conservancy, Executive Director

Mobile Phone: 262-325-4923

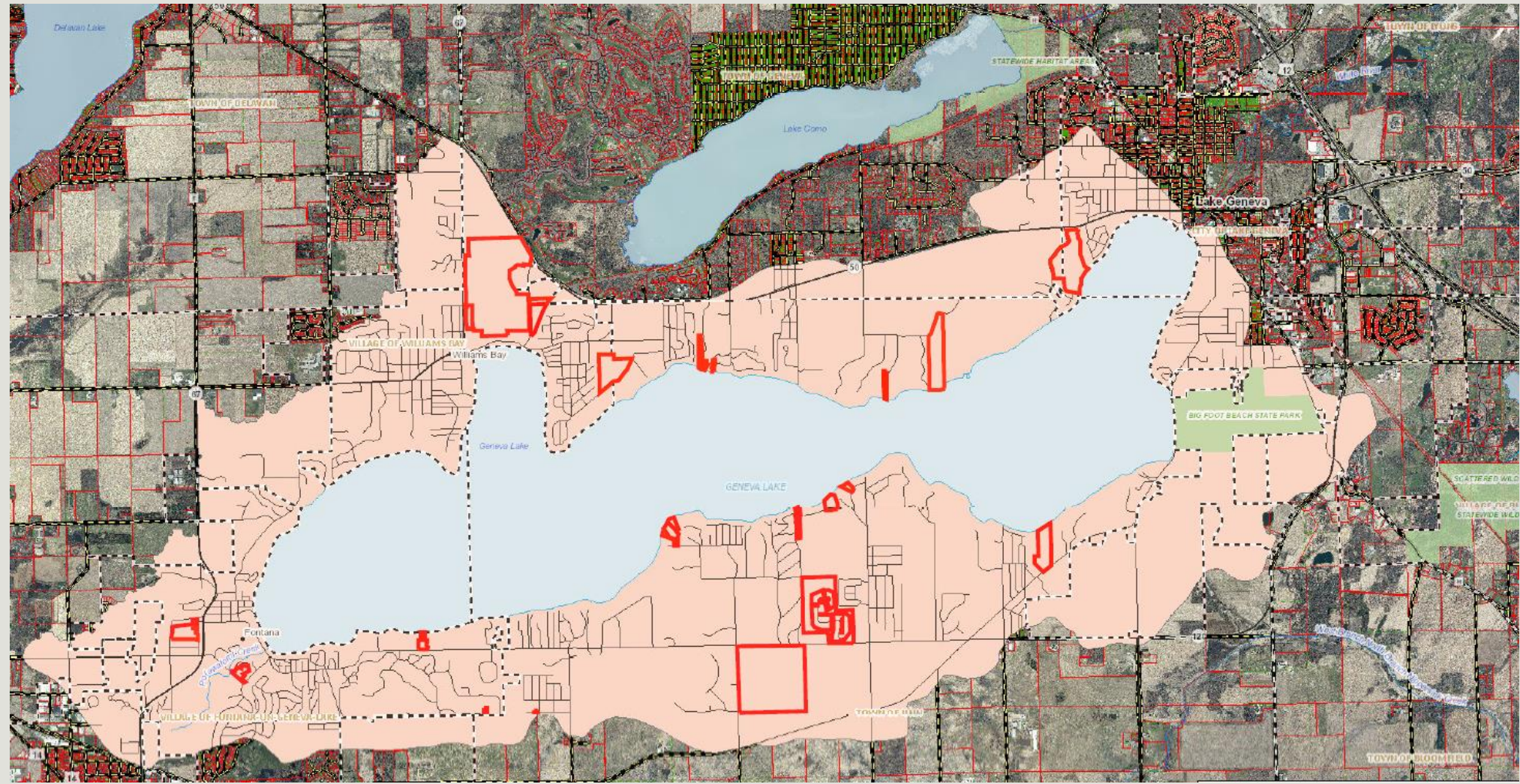
Email: kyancey@genevalakeconservancy.org

Conservancy Mission:

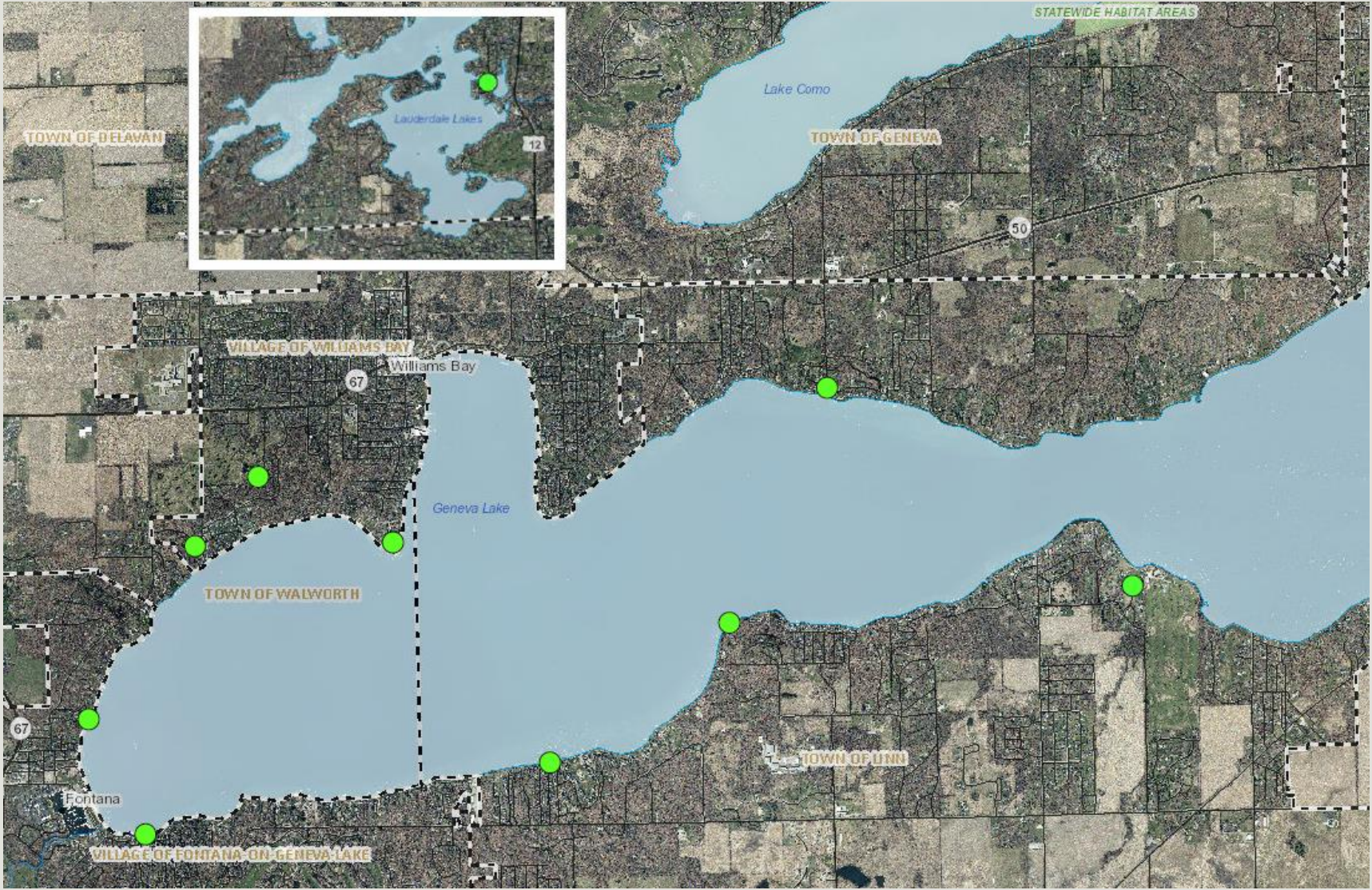
To Preserve and Restore the Lands and Waters of Walworth County and beyond



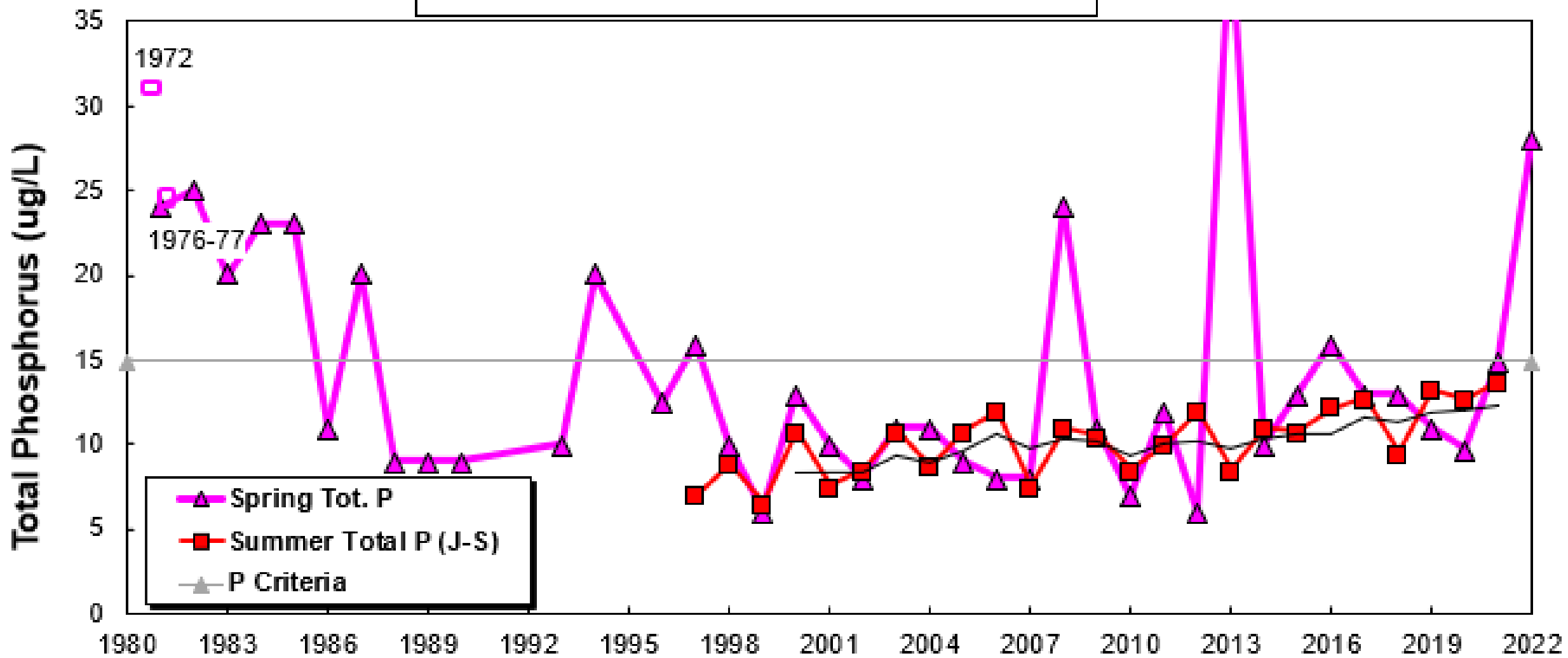
GLC Protected Lands in the Geneva Lake Watershed



GLC Healthy Lakes Completed Project Locations



Geneva Lake - West Basin



Geneva Lake Environmental Agency

Mission Statement

The Geneva Lake Environmental Agency is determined to maintain Geneva Lake's resources by protecting, preserving, and enhancing a desirable lake and watershed quality through monitoring, protection, and education.



Who and What is the GLEA?

GENEVA LAKE ENVIRONMENTAL AGENCY

Board and Staff 2023

OFFICERS

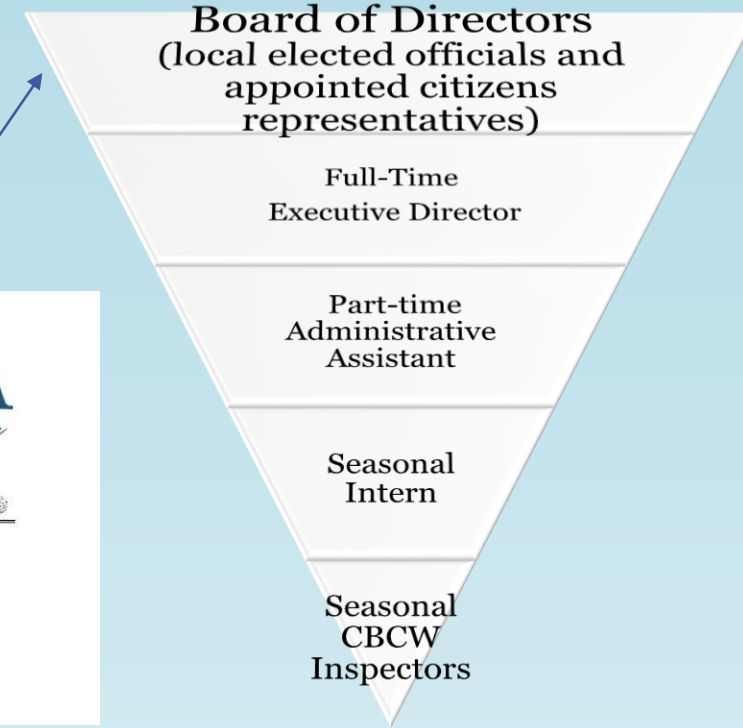
Patrick Kenny.....Chairperson
 Mary Jo Fesenmaier.....Vice Chairperson

BOARD OF DIRECTORS

Patrick Kenny.....Village of Fontana
 Rick Pappas.....Village of Fontana Citizen Rep.
 Mary Jo Fesenmaier..... City of Lake Geneva
 Terry O'Neill..... City of Lake Geneva Citizen Rep.
 Jim Weiss.....Town of Linn
 Vacant.....Town of Linn Citizen Rep.
 Rob Umans..... Village of Williams Bay
 LaMarr Lundberg..... Village of Williams Bay Citizen Rep.
 Jim Lovell..... Town of Walworth Citizen Rep.

STAFF

Jacob Schmidt..... Executive Director
 Ted Peters..... Consultant
 Aimee Townsend.....Administrative Assistant
 David Rasmussen.....Attorney



The GLEA was established in 1971 as an Intergovernmental Commission under Wis. Stat. § 66.0301.

Charitable Contributions to the GLEA are Tax-Exempt 170(c)(1)

Board Meeting Information:

Meetings are on the 3rd Thursday of Every Month @ 6:30 pm Meetings are open to the public

The GLEA is funded by

- City of Lake Geneva- \$35,000
- Village of Williams Bay- \$35,000
- Village of Fontana- \$35,000
- Town of Linn- \$35,000
- Total Tax Dollar Revenue- \$170,000
- Grants

Donations of around- \$40,000

Total Budget just over-\$200,000

What do we do?

- Lake outlet sampling at the White River
- Lake sampling, April thru November
- USGS Contract
- Clean Boats and Clean Waters
- Weekly summer beach sampling for E-coli bacteria
- Docked and Moored Annual Boat Count
- Assess Zebra Mussel impacts on the lake bottom every five years
- Aquatic Plant Surveys
- Fisheries Studies
- Summer zebra mussel monitoring
- Quarterly Lake Geneva seepage cell monitoring
- Cyanobacteria Identification
- Draft ordinances for local governments to adopted

Contact Information

Geneva Lake Environmental Agency

350 Constance BLVD.

Po Box 914

Williams Bay, WI 53191

262- 245-4532

info@gleawi.org

www.gleawi.org

Geneva Lake Association (GLA)



Thomas Nickols
Board Member of GLA & Co-Chair of Water Alliance

620-215-6234

twnickols@gmail.com

<https://genevalakeassoc.org/>



Walworth County Land Use & Resource Management Department

Mandy Bonneville
Deputy Director/County Conservationist

mbonneville@co.walworth.wi.us

262-741-7912

www.co.walworth.wi.us





Walworth County LURM: Goals and Objectives

- Promote the public health, safety, prosperity, aesthetics, and general welfare of the County by guiding physical development and preserving natural resources.
- Responsible for implementing planning, zoning, sanitation, and conservation in unincorporated areas of the County.
- Programs & Permitting:
 - Shoreland Zoning
 - Construction Site Erosion & Sediment Control
 - Storm Water Management Permits
 - Agricultural Programs
 - Others...



Walworth County LURM: Example Watershed Activities

- Odling Gravel Pit – State Hwy 67
 - Owner, County, and DNR worked to address sediment discharge into navigable waterway entering Geneva Lake.
 - Revise onsite sediment control and storm water management.
- Cover Crop Initiatives
 - Work with farmers in the Geneva Lake watershed.
 - Reduce soil erosion and runoff, increase water infiltration, lessen leaching of nutrients.

Southeastern Wisconsin **Regional Planning Commission**



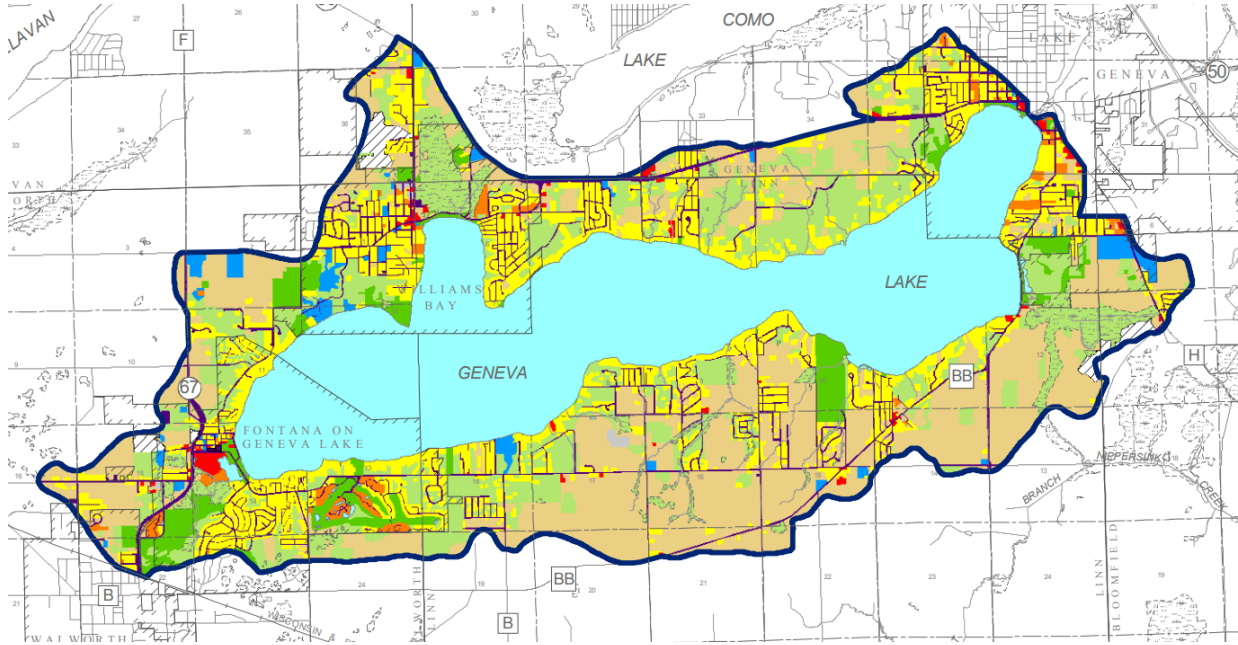
- **Public agency established in 1960 by State Legislature**
- **Provides inter-governmental planning and coordination**
- **Conducts lake and watershed inventory and prepare management plans**

Thomas Slawski, Chief Biologist

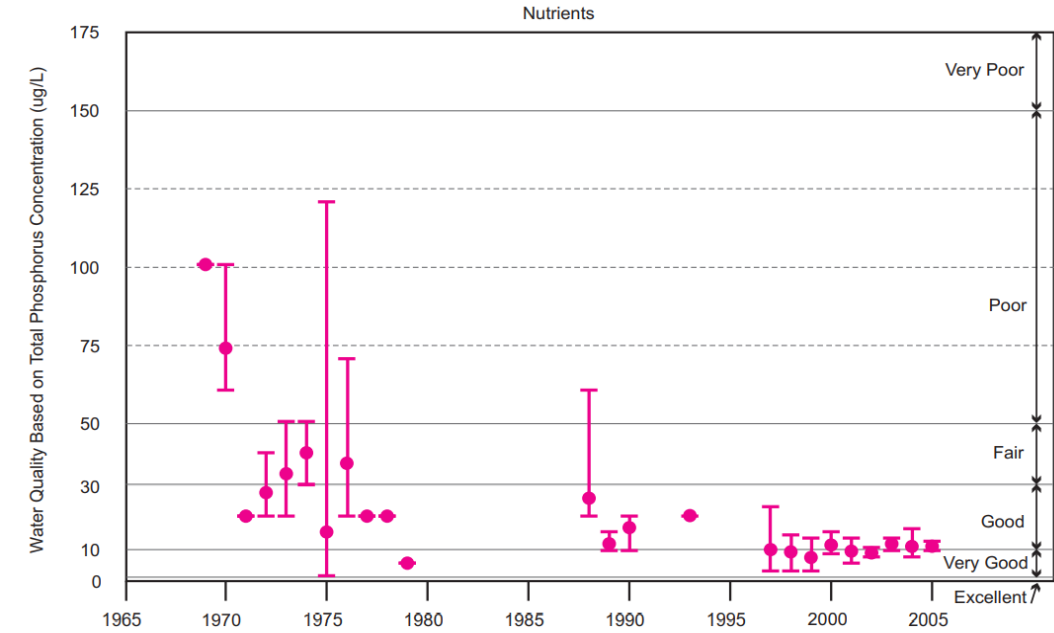
tslawski@sewrpc.org | (262) 953-3263

<https://www.sewrpc.org/SEWRPC.htm>

1985/2008 Geneva Lake Management Plan



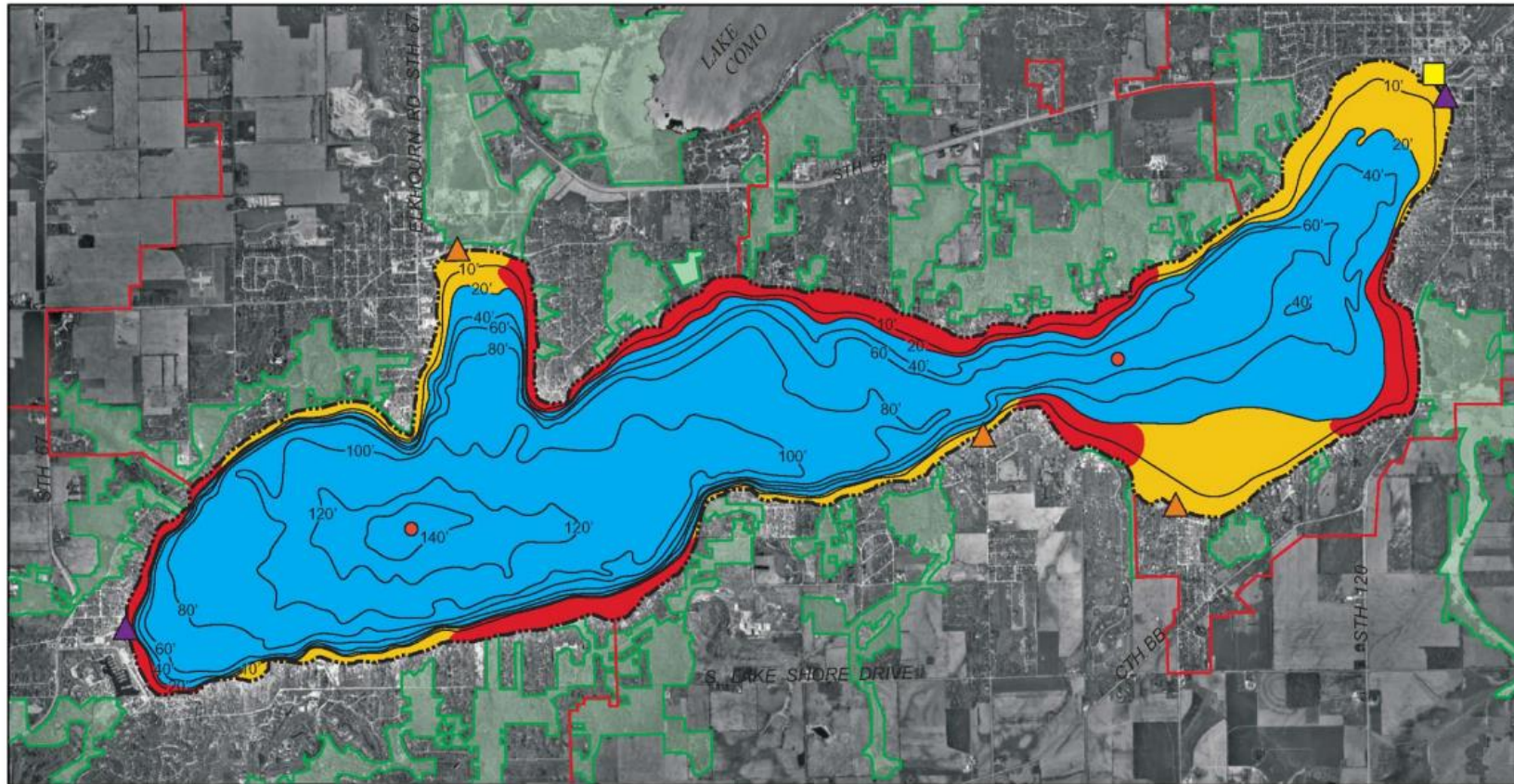
PRIMARY WATER QUALITY INDICATORS FOR GENEVA LAKE: 1969-2005



• Plan elements

- Watershed characterization
- Land use
- Pollution abatement
- Water quality
- Fisheries
- Aquatic plants
- Invasive species
- Recreational use
- Public information programming
- Institutional development

2008 Geneva Lake Management Plan



• Recommendations

- Protect environmental corridors
- Develop fuel spill response plans for marinas
- Observe land use plan guidelines
- Continue water quality monitoring
- Enforce boating regulations
- Maintain public access sites
- Protect and enhance fish habitat
- Monitor for invasive species
- Enforce fishing and wildlife regulations
- Continue public awareness and educational programs

Wisconsin Department of Natural Resources



Mike Thompson, Secretary's Director for Southeastern Wisconsin

MichaelC.Thompson@wisconsin.gov | (414) 303-3408

<https://dnr.wisconsin.gov/>

DNR: Mission and Activities

OUR MISSION

To protect and enhance our natural resources:

our air, land and water;
our wildlife, fish and forests
and the ecosystems that sustain all life.

To provide a healthy, sustainable environment
and a full range of outdoor opportunities.

To ensure the right of all people
to use and enjoy these resources
in their work and leisure.

To work with people
to understand each other's views
and to carry out the public will.

And in this partnership

consider the future
and generations to follow.



Figure 7. A 42.5", 23lb muskellunge caught on Geneva Lake in fall of 2016 (photo credit: Steve Everetts).

Bigfoot Beach State Park

Geneva Lake

Walworth County, 5401 Acres

[Overview](#) [Map](#) [Facts & Figures](#) [More](#)

Boat Landings

Boat Landing	Details	Map
Geneva Lake -- Hillside Road Access (Town of Linn)	Details	Google Map
Geneva Lake -- Chapin Road Access (Walk-in / Carry-In)	Details	Google Map
Geneva Lake -- Linn Road Access (Town of Linn)	Details	Google Map
Geneva Lake -- Wrigley Drive Access (City of Lake Geneva)	Details	Google Map
Geneva Lake -- Lake Street Access (Fontana Municipal Launch)	Details	Google Map
Geneva Lake -- Williams Bay Access (Village of Williams Bay)	Details	Google Map

DNR: Example Watershed Projects

- DNR appreciates broad partnerships and community engagement!
- Green infrastructure - stormwater treatment
- Clean Boats/Clean Waters
- Starry stonewort management
- Big Foot Creek Watershed Study – phosphorus reduction

Big Foot Creek's reddish/orange discharge to Geneva Lake just south of Big Foot Beach State Park's swim area.



Southeastern Wisconsin **Regional Planning Commission**



➤ **Generalized Project Roles – Lake Management Plans**

- **Encourage use of a “bottom up” as opposed to a “top down” planning approach**
- **Intermediary between various organizations focusing on a lake.**
- **Assist with scope development, grant proposals, project execution**

Dale Buser, Principal Specialist

dbuser@sewrpc.org | (262) 953-3228
<https://www.sewrpc.org/SEWRPC.htm>

SEWRPC Geneva Lake Management Planning Activity

- Commission has completed varied Geneva Lake-specific data inventories, focused studies, and management plans over the past 60 years (e.g., 1969, 1985, 2008, 2020, 2021).
- Most recent Lake comprehensive management plan was published May 2008.
- Lake management issues evolve over time: some continue, some metamorphose, some gain or lose prominence, while some emerge anew.
- Commission initially met with a panel of Lake-focused organizations during February 2020 to discuss emerging topics of interest.
- As request by the working group during February meeting, Commission completed field work and a preliminary written report focusing on select Lake tributaries during 2020. Also assisted with tributary water quality sampling study and aquatic plant surveys.

How was the Management Plan Update Scope of Work Developed?

- During the first half of 2021, Commission provided written and oral advice to working group to help identify issues and topics important to Geneva Lake and to be included in a revised lake management plan.
- Working group expressed desire to apply for a WDNR surface water grant application.
- Commission always *collaborates* with entities to help procure grant funding for lake and stream projects. Commission does not provide grant writing services without significant involvement of a waterbody-focused, grant-eligible, entity.
- To allow completion of a WDNR surface water grant application, the Geneva Lake Conservancy (GLC) volunteered to lead grant application initiative.
- Commission assisted the GLC develop a final scope of work based upon input provided by group.
- Scope of work was used to develop a WDNR NR 193 grant application. Grant was awarded early 2022.

Approved Grant Scope of Work

- Task 1: Update In-Lake Data Sets and Evaluate Meaning and Implications
 - Subtask 1.1 Re-evaluate Geneva Lake's aquatic plant community
 - Subtask 1.2 Re-evaluate Lake water quality data
 - Subtask 1.3 Examine sediment deposition at the mouths of three prominent Lake tributaries
 - Subtask 1.4 Evaluate boat traffic characteristics
 - Subtask 1.5 Evaluate Bigfoot Creek water quality concerns
 - Subtask 1.6 Review impact of past management efforts
- Task 2: Quantify Stakeholder Perceptions, Needs, Desires, and Aspirations and Foster Cooperation
 - Subtask 2.1 Social survey
 - Subtask 2.2 Stakeholder education/outreach
 - Subtask 2.3 Enhance stakeholder cooperation and collaboration

Approved Grant Scope of Work

- Task 3: Inventory Watershed Conditions and Examine Its Influence on Lake Health
 - Subtask 3.1 Delineate and characterize the Lake's watershed.
 - Subtask 3.2 Evaluate select tributaries
 - Subtask 3.3 Windwood Creek watershed demonstration project
 - Subtask 3.4 Examine Lake-tributary stormwater infrastructure
- Task 4: Publish Revised Lake Management Plan
- Project scheduled to be completed by 2025.